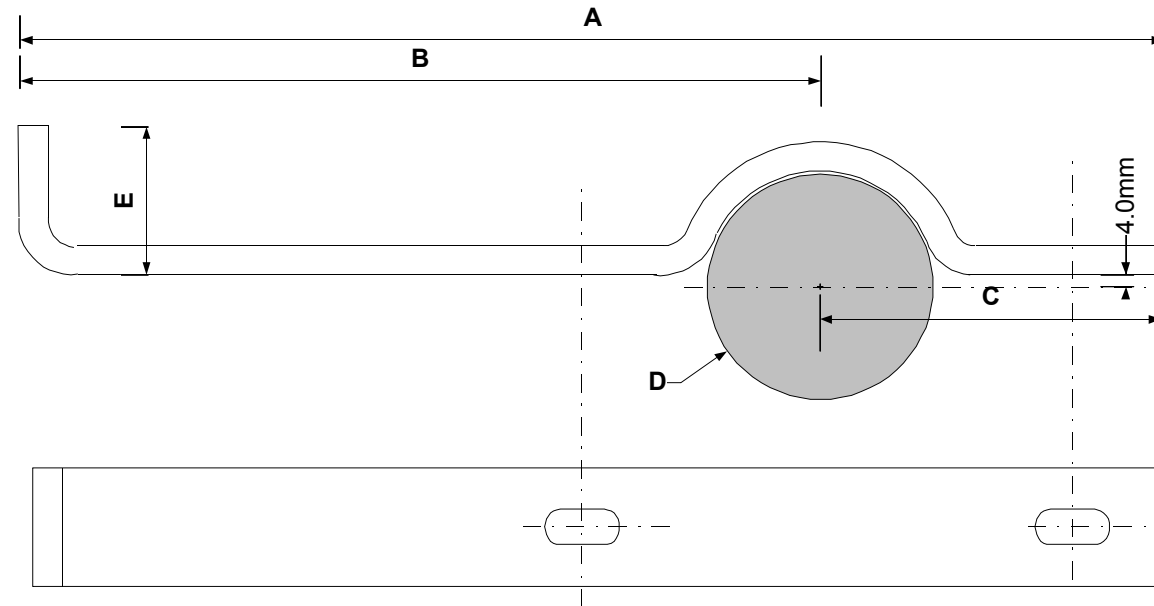


LADDER BAR ASSEMBLY

Application : Provides a safe ladder rest on Lighting Columns



Material - Low carbon Steel to EN 10130 FePo4 - 40 x 10 Flat section

Finish - Hot Dip Galvanised to EN ISO1461

All dimensions in Millimetres

Regent Part No	Description	Dimn A	Dimn B	Dimn C	Dimn D	Dimn E
1048.R	LADDER BAR ASSEMBLY - 76MM DIA	385	270	115	76.1	50

The Regent Engineering Co. (Walsall) Ltd Salisbury Street Darlaston Wednesbury West Midlands WS10 8XB UK

E-mail : info@regenteng.com

Web : www.regenteng.com

Phone 44 (0)121 526 6060

Fax : 44(0)121 526 4789

© 2012