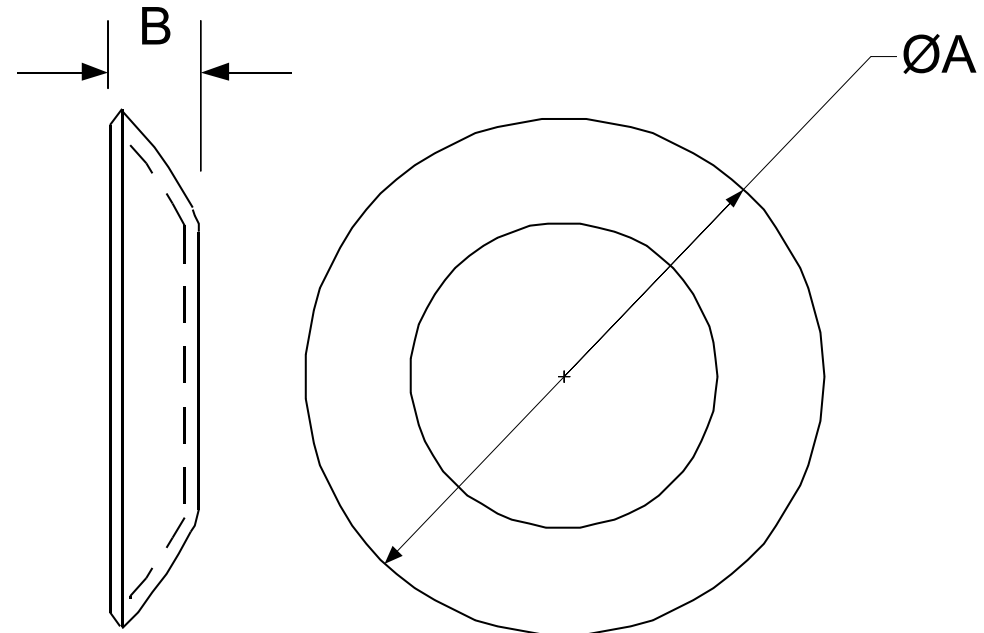


POLE CAPS - Weld on

Application : Capping of Lighting Columns, Sign Posts, Bracket Arms, CCTV and Transmission Poles



Material - Low carbon Steel to EN 10130 FePo4 - 3mm Thick

Finish - Self Colour

All dimensions in Millimetres

| Regent Part No | Description | Dimn A | Dimn B | To fit TubeØ |
|----------------|---------------------|--------|--------|--------------|
| 0021.R | 74MM Ø WELD ON CAP | 74 | 9 | 76.1 |
| 0022.R | 86MM Ø WELD ON CAP | 86 | 16 | 88.9 |
| 0023.R | 110MM Ø WELD ON CAP | 110 | 22 | 114.3 |
| 0150.R | 137MM Ø WELD ON CAP | 137 | 25 | 139.7 |

The Regent Engineering Co. (Walsall) Ltd Salisbury Street Darlaston Wednesbury West Midlands WS10 8XB UK

E-mail : info@regenteng.com

Web : www.regenteng.com

Phone 44 (0)121 526 6060

Fax : 44(0)121 526 4789

© 2012